

franklin parrasch gallery, inc.

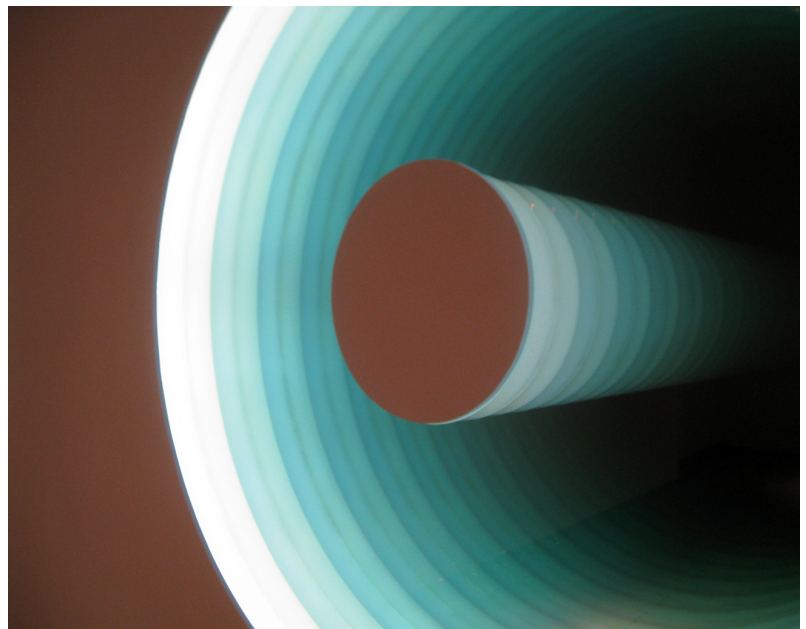
53 east 64th st. new york, ny 10065
www.franklinparrasch.com
t 212 246 5360 f 646 429 8770



Adam Belt's Mirrored Works Defy Expectation and Perception

Editor on April 17, 2012

NEW YORK—Two large, endless prisms are recessed into the walls of Franklin Parrasch Gallery. The installations by Adam Belt are illusions—fascinating works that play with depth, magnification, reflection and light. Composed of multiple mirrors, the works in “Through the Rabbit Hole” appear to be recede infinitely like geometric tunnels into the wall, but the installations are only 3.5-inches deep.

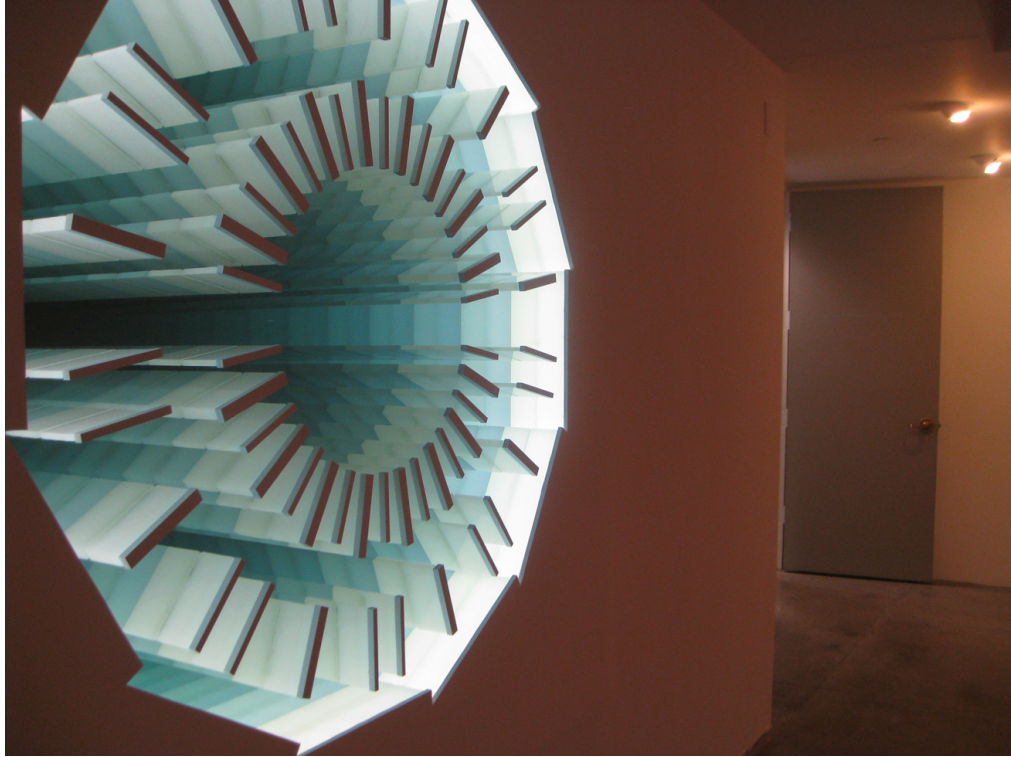


The exhibit is on view from April 10 to May 12, 2012.

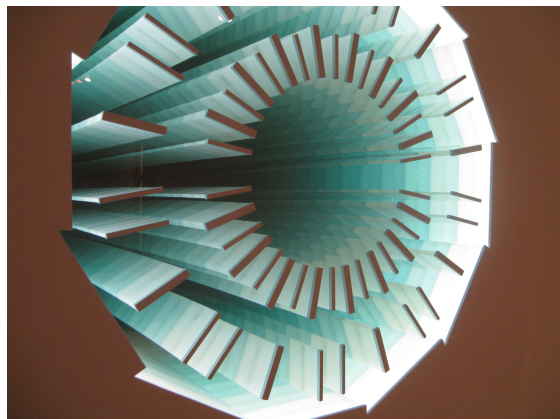
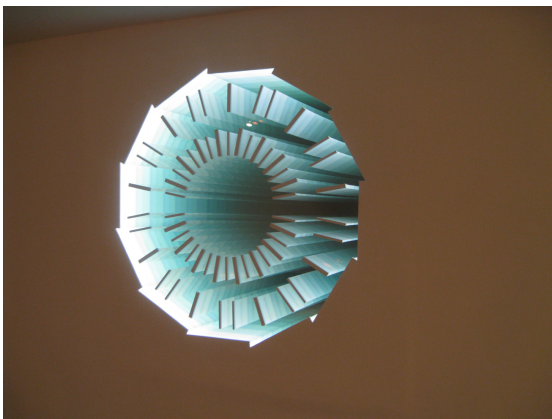
All photos by Arts Observer

franklin parrasch gallery, inc.

53 east 64th st. new york, ny 10065
www.franklinparrasch.com
t 212 246 5360 f 646 429 8770

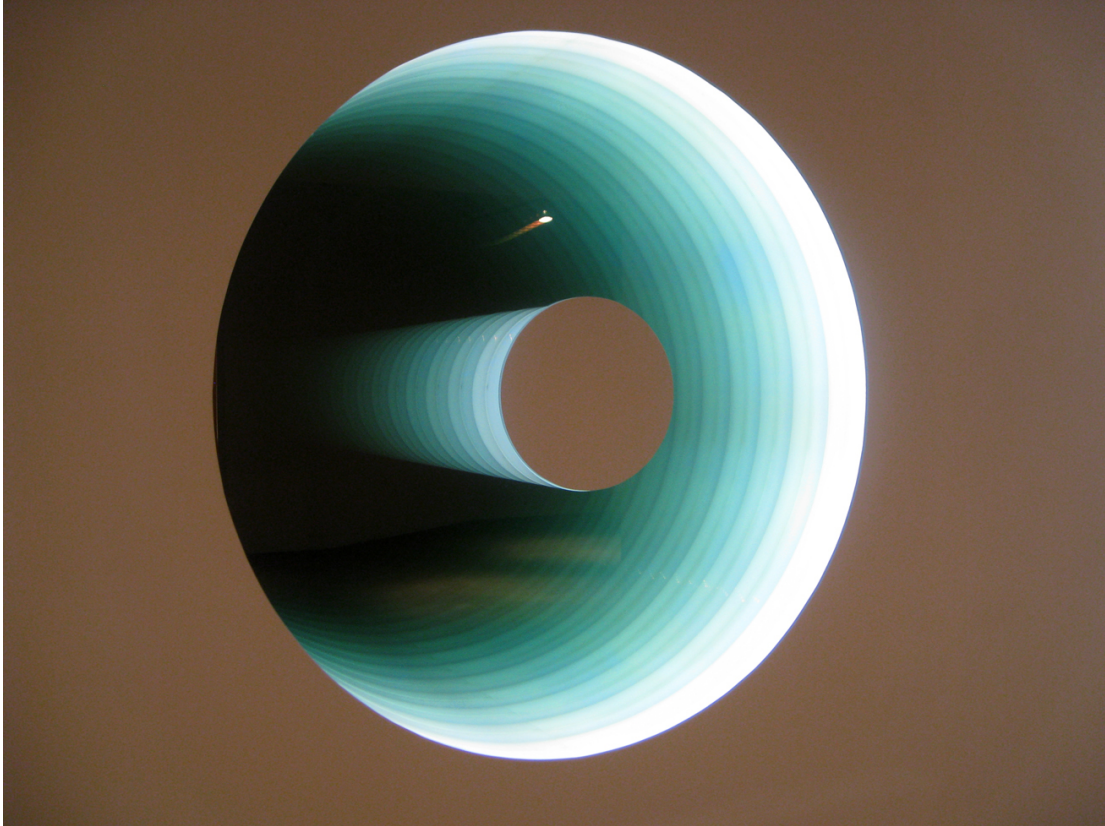


"Down the Rabbit Hole (CMS Detector)," 2012 (two-way mirror, mirror, wood, acrylic and LED lights).



franklin parrasch gallery, inc.

53 east 64th st. new york, ny 10065
www.franklinparrasch.com
t 212 246 5360 f 646 429 8770



"Through the Looking Glass (Hubble)," 2012 (two-way mirror, mirror, wood, acrylic and LED lights).